

Pierce and St. Croix Counties

2016 Community Health Needs Assessment Data Packet

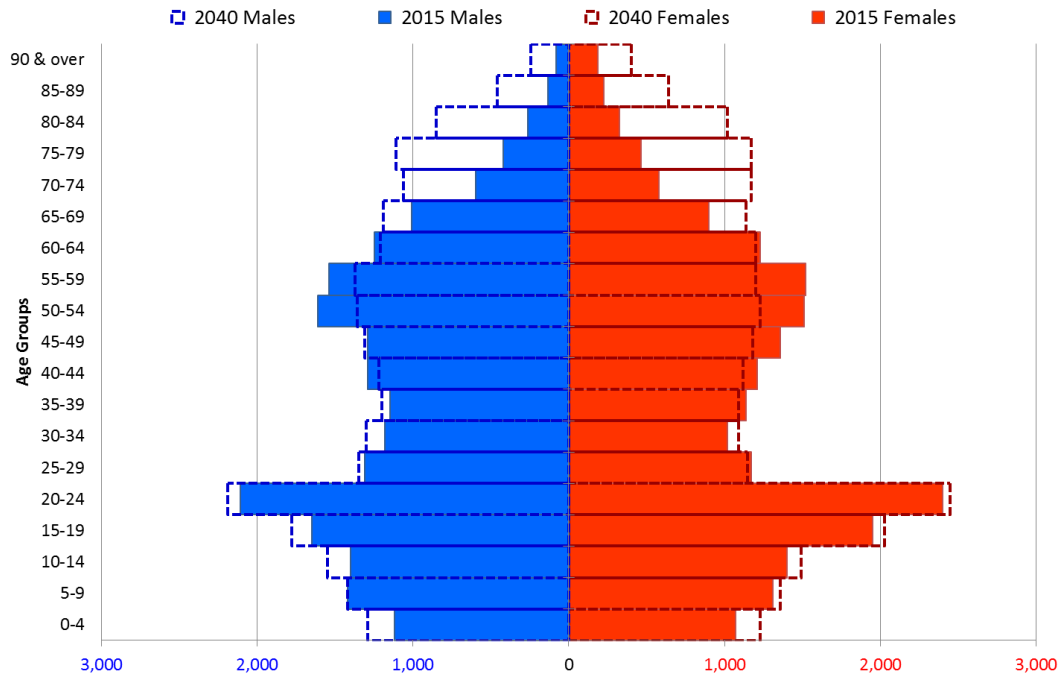
Stakeholder Meeting #2

Contents

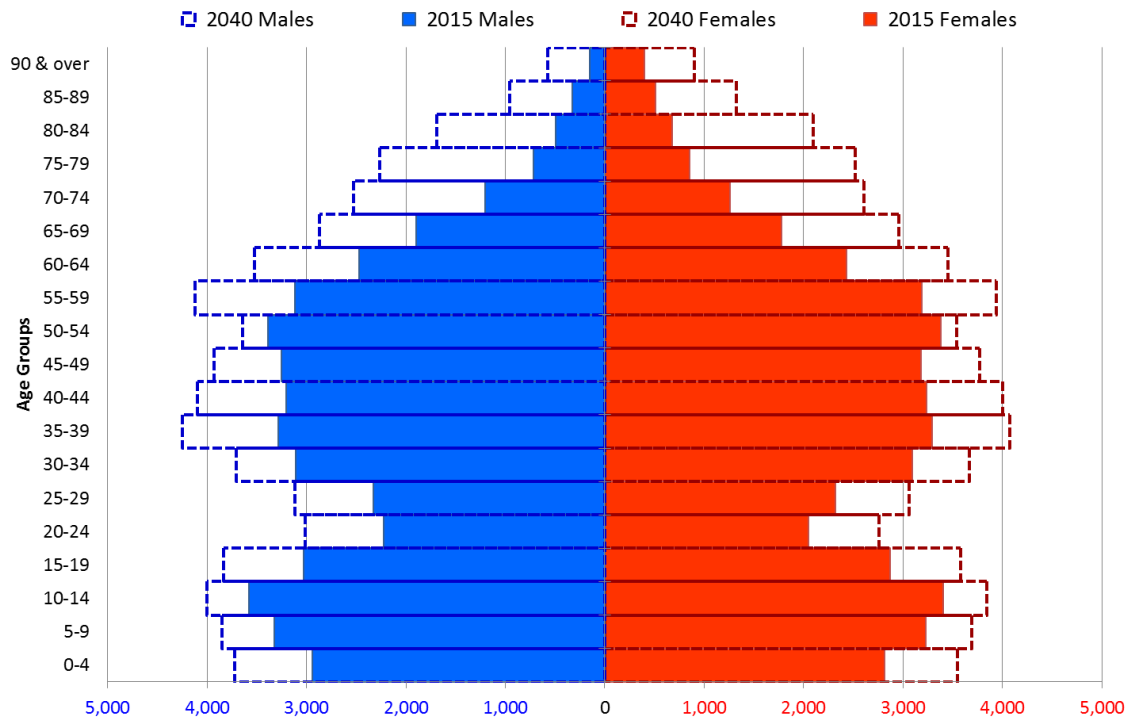
- AGE, SEX, AND ETHNICITY3**
- FOOD INSECURITY - FREE AND REDUCED LUNCH PROGRAM5**
- FOOD INSECURITY - FOOD SHELF UTILIZATION7**
- EDUCATION8**
- INCOME & POVERTY 10**
- COST OF HOUSING 12**
- ADVERSE CHILDHOOD EXPERIENCES..... 14**
- ACCESS TO HEALTHY FOOD 16**
- ACCESS TO INSURANCE, ACCESS TO DENTAL CARE 18**
- ALCOHOL AND OTHER DRUGS – USE AND COST TO SOCIETY 19**
- MENTAL HEALTH 25**
- TRAFFIC FATALITIES 26**

AGE, SEX, AND ETHNICITY

**Pierce County Age-Sex Pyramid,
2015 and 2040 Population Projections**



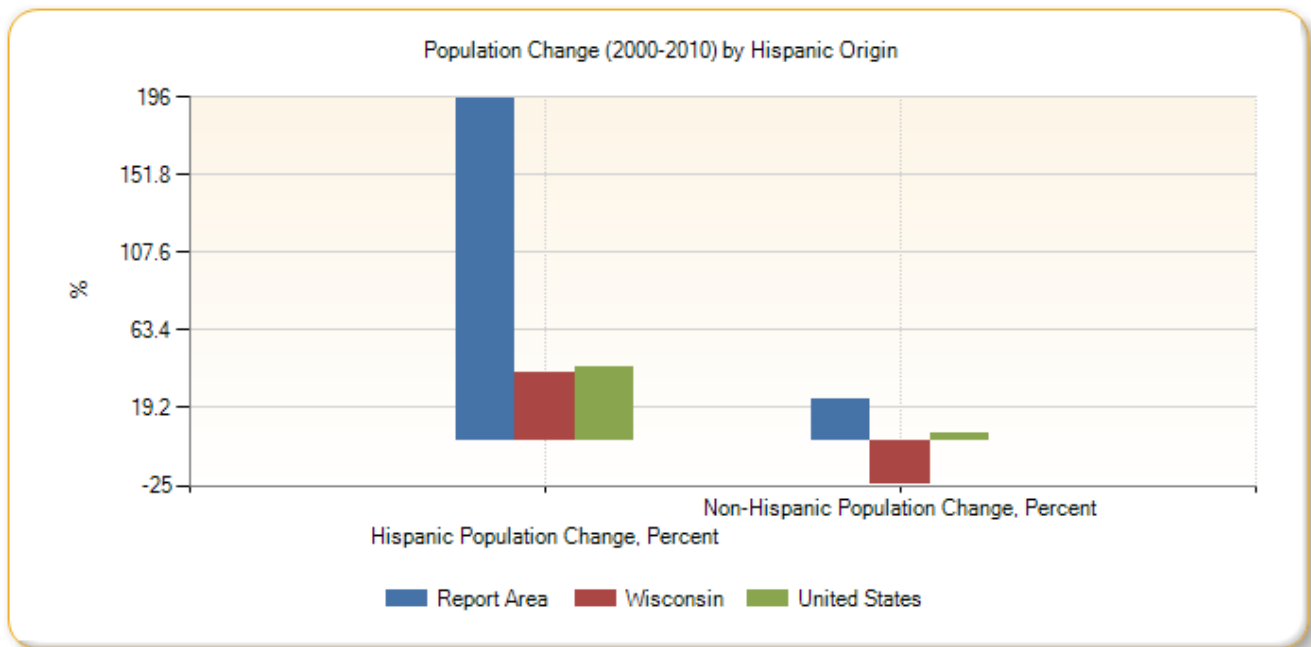
**Saint Croix County Age-Sex Pyramid,
2015 and 2040 Population Projections**



Source: Wisconsin Department of Administration, County Age-Sex Pyramids, 2010 and 2040, produced in 2013 on 2010 census, <http://doa.wi.gov/divisions/intergovernmental-relations/demographic-services-center/projections>

Population Change (2000-2010) by Hispanic Origin

Report Area	Hispanic Population Change, Total	Hispanic Population Change, Percent	Non-Hispanic Population Change, Total	Non-Hispanic Population Change, Percent
Report Area	1,531	195.28%	23,874	24.07%
Pierce County, WI	322	106.98%	3,893	10.66%
St. Croix County, WI	1,209	250.31%	19,981	31.88%
Wisconsin	93,733	38.68%	-1,722,593	-24.35%
United States	15,098,149	42.7%	10,153,011	4.09%



FOOD INSECURITY - FREE AND REDUCED LUNCH PROGRAM

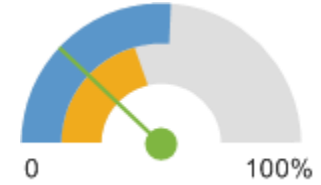
Children Eligible for Free/Reduced Price Lunch

Children in households at or below 130% of the federal poverty level (FPL) are eligible for free meals; children in households below 185% of FPL are eligible for reduced cost meals.

Within the report area 5,260 public school students or 23.94% are eligible for Free/Reduced Price lunch out of 21,982 total students enrolled.

This indicator is relevant because it assesses vulnerable populations which are more likely to have multiple health access, health status, and social support needs. Additionally, when combined with poverty data, providers can use this measure to identify gaps in eligibility and enrollment.

Percent Students Eligible for Free or Reduced Price Lunch

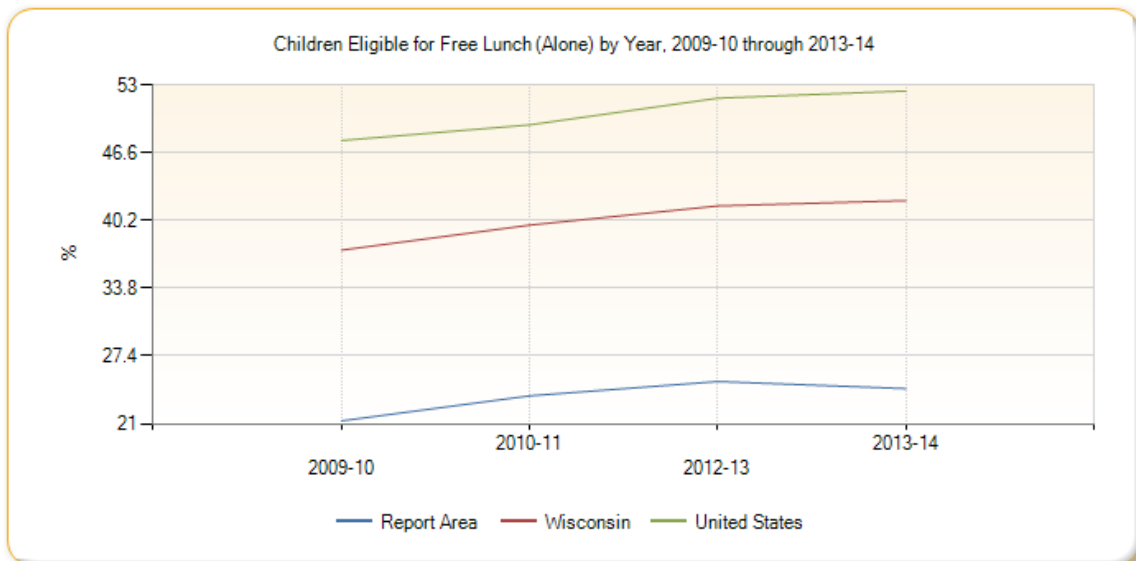


- Report Area (23.94%)
- Wisconsin (41.91%)
- United States (52.35%)

Report Area	Total Students	Number Free/Reduced Price Lunch Eligible	Percent Free/Reduced Price Lunch Eligible
Report Area	21,982	5,260	23.94%
Pierce County, WI	7,617	1,865	24.48%
St. Croix County, WI	14,365	3,395	23.65%
Wisconsin	873,841	365,711	41.91%
United States	50,195,195	26,012,902	52.35%

Data Source: National Center for Education Statistics, NCES - Common Core of Data. 2013-14. Source geography: Address

Children Eligible for Free Lunch by Year, 2009-10 through 2013-14



**Pierce and St. Croix County School Districts and Private Schools
Free and Reduced Lunch Eligibility and Participation, 2014**

School Districts	Enrollment	# Free	% Free	# Red.	% Red.	Total # Free and Reduced	Total % Free and Reduced	Average Daily Participation (ADP)	Free ADP	Red. ADP	Paid ADP
Baldwin-Woodville	1594	247	15.5%	70	4.4%	317	19.9%	1132	211	59	862
Ellsworth	1704	268	15.7%	96	5.6%	364	21.4%	920	223	74	623
Elmwood	308	87	28.2%	45	14.6%	132	42.9%	235	56	31	148
Glenwood	764	233	30.5%	46	6.0%	279	36.5%	399	153	31	215
Hudson	5461	657	12.0%	185	3.4%	842	15.4%	3020	434	123	2463
New Richmond	3054	693	22.7%	237	7.8%	930	30.5%	2209	514	177	1518
Plum City	289	96	33.2%	32	11.1%	128	44.3%	205	71	31	103
Prescott	1262	212	16.8%	71	5.6%	283	22.4%	739	148	50	541
River Falls	3100	664	21.4%	133	4.3%	797	25.7%	1945	412	91	1442
Somerset	1473	341	23.2%	86	5.8%	427	29.0%	636	186	34	416
Spring Valley	682	258	37.5%	72	10.6%	328	25.7%	458	114	36	308
SC Central	1419	231	16.3%	85	6.0%	316	22.3%	1008	157	63	788
Private Schools											
St. Bridget	167	5	3.0%	2	1.2%	7	4.2%	86	3	2	81
St. Francis	96	4	4.2%	2	2.1%	6	6.3%	72	4	2	66
St. Joseph	87	8	9.2%	0	0.0%	8	9.2%	54	6	0	48
St. Anne's	121	2	1.7%	0	0.0%	2	1.7%	51	1	0	50
St. Mary's	139	12	8.6%	6	4.3%	18	12.9%	55	8	4	43
St. Patrick's	290	17	5.9%	6	2.1%	23	7.9%	100	6	5	89

Source: Wisconsin Department of Public Instruction, 2014, <http://dpi.wi.gov/school-nutrition/program-statistics>

Data Information: These data reports provide district level information regarding student enrollment and free and reduced price eligible students. The report also provides meal participation data by free/reduced price and paid categories. The source data for the annual E&PR comes from annual October reimbursement claims submitted to the DPI by Local Education Agencies (LEAs). Schools have 60 days after the last day of the month to submit claims therefore data is first assembled at the beginning of January. E&PR is typically posted near the beginning of the following year. Districts and schools that are not listed do not participate in USDA Child Nutrition Programs.

FOOD INSECURITY - FOOD SHELF UTILIZATION

[2014 food shelf utilization tables – Pierce and St. Croix Counties]

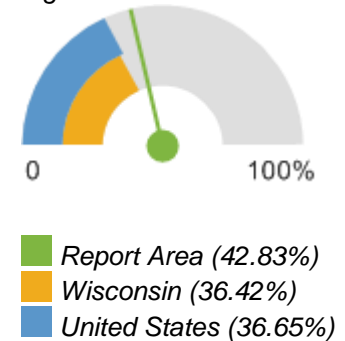
EDUCATION

Population with Associate's Level Degree or Higher

42.83% of the population aged 25 and older, or 34,827 have obtained an Associate's level degree or higher. This indicator is relevant because educational attainment has been linked to positive health outcomes.

Percent Population Age 25 with Associate's Degree or Higher

Report Area	Total Population Age 25	Population Age 25 with Associate's Degree or Higher	Percent Population Age 25 with Associate's Degree or Higher
Report Area	81,323	34,827	42.83%
Pierce County, WI	25,017	9,287	37.12%
St. Croix County, WI	56,306	25,540	45.36%
Wisconsin	3,827,815	1,394,152	36.42%
United States	206,587,856	75,718,936	36.65%



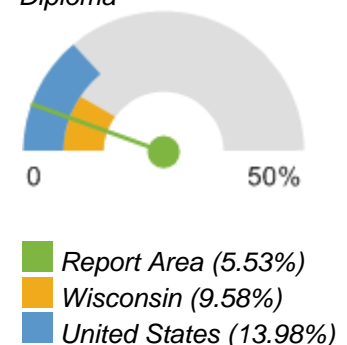
Data Source: US Census Bureau, American Community Survey. 2009-13. Source geography: Tract

Population with No High School Diploma

Within the report area there are 4,497 persons aged 25 and older without a high school diploma (or equivalency) or higher. This represents 5.53% of the total population aged 25 and older. This indicator is relevant because educational attainment is linked to positive health outcomes ([Freudenberg, Ruglis, 2007](#)).

Percent Population Age 25 with No High School Diploma

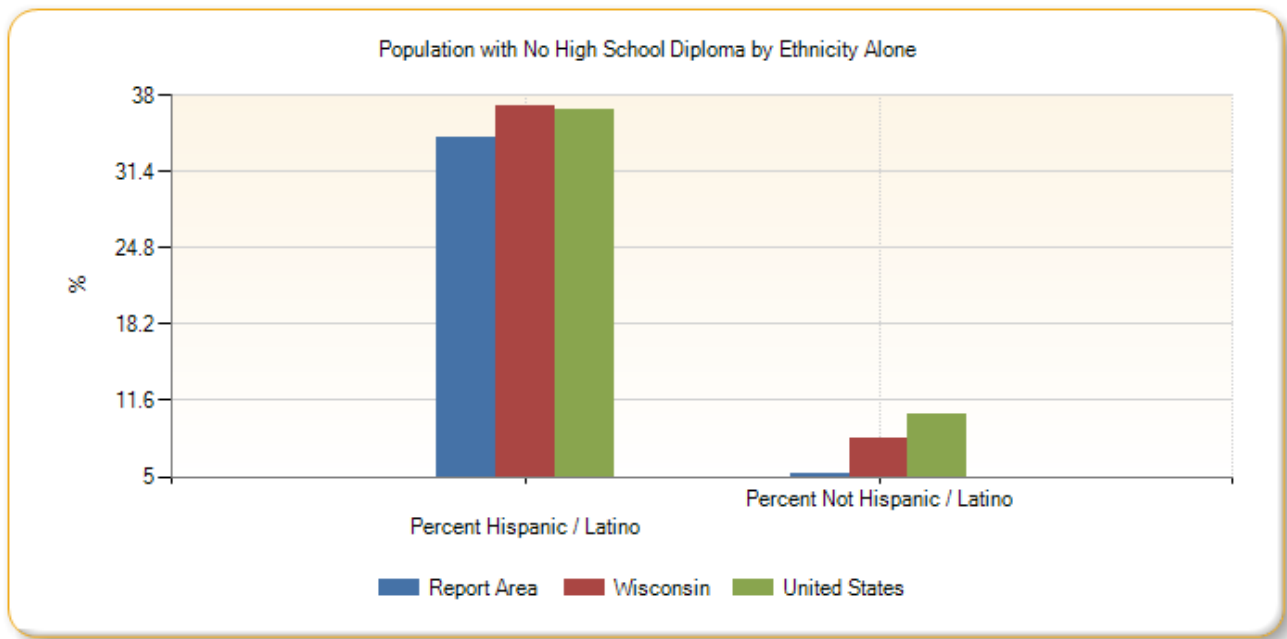
Report Area	Total Population Age 25	Population Age 25 with No High School Diploma	Percent Population Age 25 with No High School Diploma
Report Area	81,323	4,497	5.53%
Pierce County, WI	25,017	1,638	6.55%
St. Croix County, WI	56,306	2,859	5.08%
Wisconsin	3,827,815	366,876	9.58%
United States	206,587,856	28,887,720	13.98%



Data Source: US Census Bureau, American Community Survey. 2009-13. Source geography: Tract

Population with No High School Diploma by Ethnicity Alone

Report Area	Total Hispanic / Latino	Total Not Hispanic / Latino	Percent Hispanic / Latino	Percent Not Hispanic / Latino
Report Area	374	4,123	34.38%	5.14%
Pierce County, WI	55	1,583	17.86%	6.41%
St. Croix County, WI	319	2,540	40.9%	4.57%
Wisconsin	61,121	305,755	37.03%	8.35%
United States	10,333,055	18,554,664	36.71%	10.4%



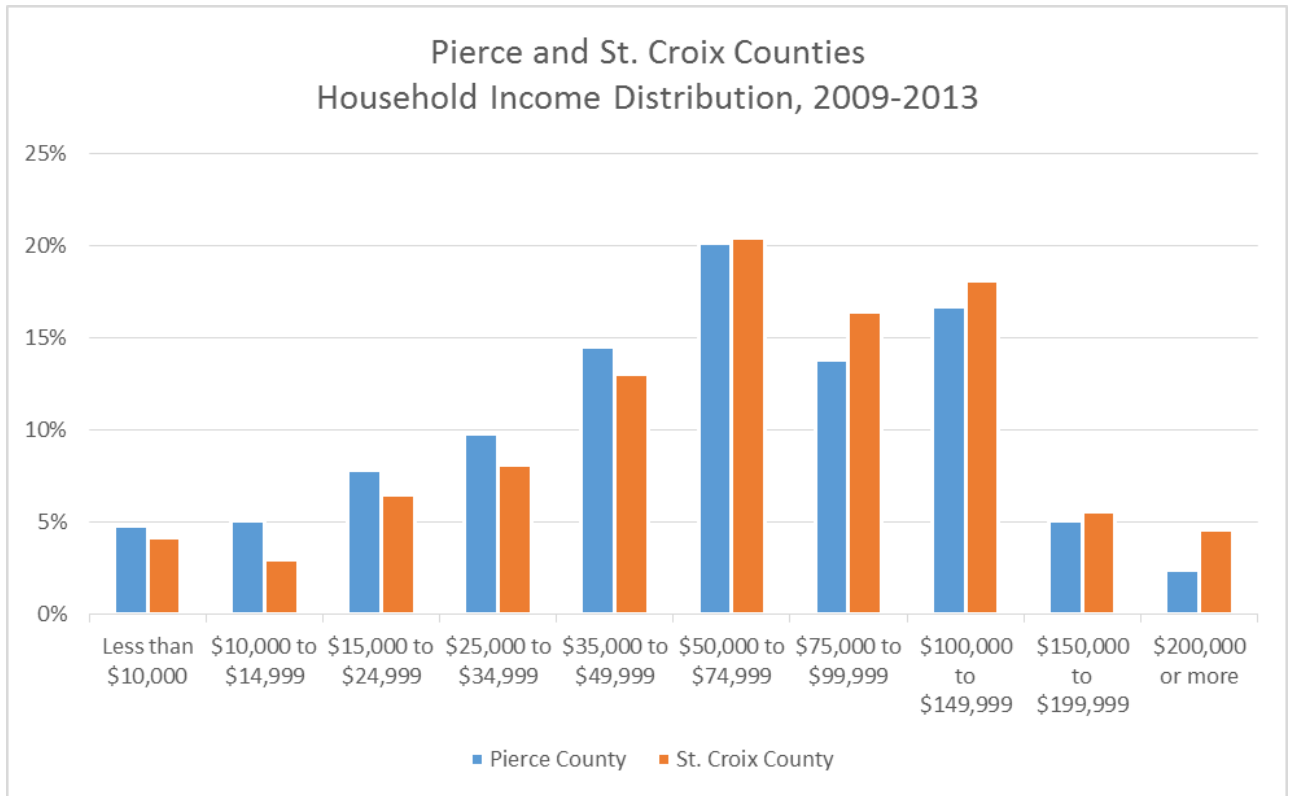
INCOME & POVERTY

Federal Poverty Level Table (FPL)

2015 poverty guidelines for the 48 contiguous states and the District of Columbia

Persons in Family/Household	Poverty Guideline (annual income)
1	\$11,770
2	\$15,930
3	\$20,090
4	\$24,250
5	\$28,410
6	\$32,570
7	\$36,730
8	\$40,890

For families/households with more than 8 persons, add \$4,160 for each additional person.



Source: U.S. Census Bureau, 2009-2013 5-Year American Community Survey

Western Wisconsin ZIP Codes and Household Income Distribution, 2009-2013

	54002	54003	54011	54014	54016	54017	54021	54022	54023	54025	54723	54740	54750	54761	54767
	Baldw	Belden	Ellsw	Hager	Hudson	NR	Presc	RF	Robert	Somer	Bay C	Elmwd	MR	Plum C	SV
Total # Households	2,433	379	2,484	925	11,978	6,238	2,411	7,837	1,324	2,503	537	869	394	491	1,294
Less than \$10,000	6.1%	4.0%	4.6%	1.6%	3.0%	6.9%	3.8%	5.6%	3.5%	3.6%	6.5%	5.1%	8.1%	4.1%	3.1%
\$10,000 to \$14,999	4.4%	6.1%	5.9%	1.7%	2.9%	2.7%	0.9%	5.2%	3.2%	4.5%	7.1%	5.2%	4.3%	6.7%	6.8%
\$15,000 to \$24,999	9.0%	4.2%	7.2%	4.3%	5.1%	7.8%	8.2%	7.9%	5.3%	6.2%	9.3%	6.9%	6.6%	9.6%	11.4%
\$25,000 to \$34,999	6.8%	5.0%	9.6%	3.8%	6.3%	11.6%	3.9%	10.6%	10.1%	7.3%	13.4%	12.1%	9.1%	13.8%	9.4%
\$35,000 to \$49,999	9.5%	18.2%	13.4%	14.8%	11.9%	13.9%	11.1%	13.2%	10.0%	16.1%	15.5%	16.7%	20.1%	16.9%	17.5%
\$50,000 to \$74,999	30.9%	20.6%	20.9%	29.9%	17.7%	18.8%	20.4%	17.9%	20.5%	25.6%	18.1%	20.3%	21.1%	25.1%	20.0%
\$75,000 to \$99,999	15.9%	23.5%	14.2%	13.2%	14.7%	16.8%	16.5%	14.9%	18.1%	15.3%	12.1%	18.6%	15.0%	12.0%	14.5%
\$100,000 to \$149,999	12.0%	11.9%	19.1%	21.7%	21.8%	17.3%	20.7%	16.0%	20.4%	16.5%	15.1%	12.3%	10.4%	10.6%	14.5%
\$150,000 to \$199,999	3.6%	6.1%	3.8%	7.2%	8.7%	2.5%	10.9%	5.5%	5.9%	3.5%	3.0%	1.5%	2.5%	0.4%	1.9%
\$200,000 or more	1.7%	0.5%	1.4%	1.6%	8.0%	1.6%	3.7%	3.3%	2.9%	1.6%	0.0%	1.4%	2.8%	0.8%	0.9%
Median income (dollars)	62,286	66,339	62,589	69,485	80,463	60,123	78,887	60,016	72,292	62,096	48,021	52,596	51,029	49,345	52,212
Mean income (dollars)	67,397	70,060	70,061	82,146	101,051	69,070	96,682	74,828	80,203	69,301	57,463	62,972	63,457	55,700	61,507

Source: U.S. Census Bureau, 2009-2013 5-Year American Community Survey

COST OF HOUSING

Housing Cost Burden (30%)

This indicator reports the percentage of the households where housing costs exceed 30% of total household income. This indicator provides information on the cost of monthly housing expenses for owners and renters. The information offers a measure of housing affordability and excessive shelter costs. The data also serve to aid in the development of housing programs to meet the needs of people at different economic levels.

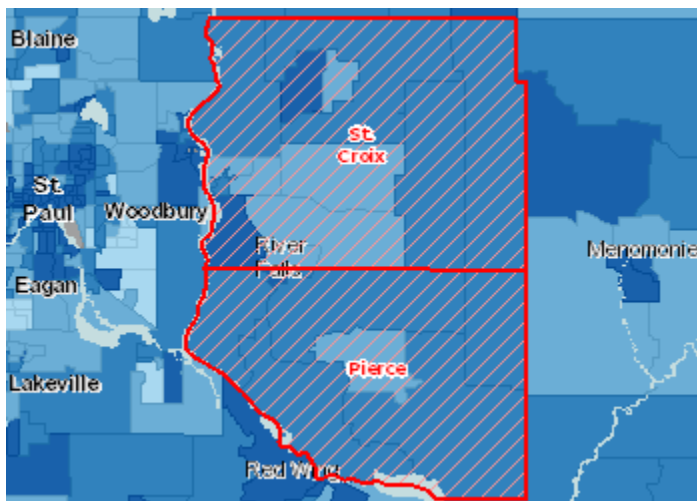
Percentage of Households where Housing Costs Exceed 30% of Income



■ Report Area (31.5%)
■ Wisconsin (32.79%)
■ United States (35.47%)

Report Area	Total Households	Cost Burdened Households (Housing Costs Exceed 30% of Income)	Percentage of Cost Burdened Households (Over 30% of Income)
Report Area	47,183	14,865	31.5%
Pierce County, WI	15,069	4,904	32.54%
St. Croix County, WI	32,114	9,961	31.02%
Wisconsin	2,288,332	750,328	32.79%
United States	115,610,224	41,002,236	35.47%

Data Source: US Census Bureau, American Community Survey. 2009-13. Source geography: Tract



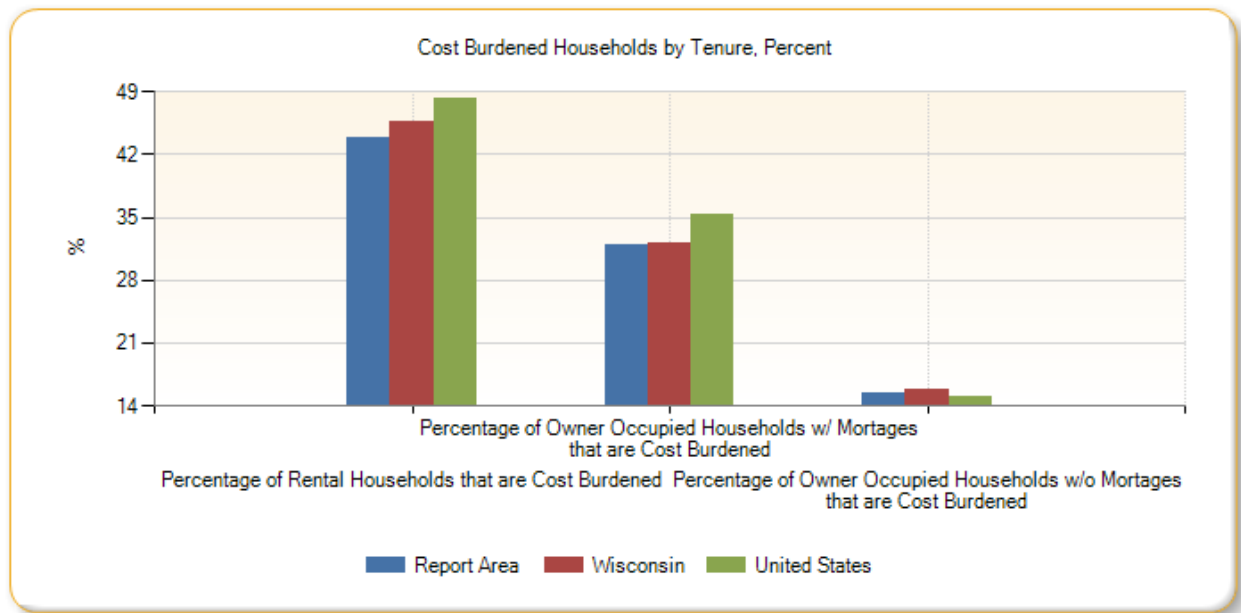
Cost Burdened Households (Housing Costs Exceed 30% of Household Income), Percent by Tract, ACS 2009-13

- Over 35.1%
- 28.1 - 35.0%
- 21.1 - 28.0%
- Under 21.1%
- No Data or Data Suppressed
- Report Area

Cost Burdened Households by Tenure, Percent

This data shows the percentage of households by tenure that are cost burdened. Cost burdened rental households (those that spent more than 30% of the household income on rental costs) represented 43.92% of all of the rental households in the report area, according to the U.S. Census Bureau American Community Survey (ACS) 2009-2013 5-year estimates. The data for this indicator is only reported for households where tenure, household housing costs, and income earned was identified in the American Community Survey.

Report Area	Rental Households	Percentage of Rental Households that are Cost Burdened	Owner Occupied Households (With Mortgage)	Percentage of Owner Occupied Households w/ Mortgages that are Cost Burdened	Owner Occupied Households (No Mortgage)	Percentage of Owner Occupied Households w/o Mortgages that are Cost Burdened
Report Area	11,091	43.92%	26,970	31.85%	9,122	15.38%
Pierce County, WI	3,963	43.25%	7,911	33.46%	3,195	17%
St. Croix County, WI	7,128	44.29%	19,059	31.19%	5,927	14.51%
Wisconsin	729,486	45.61%	1,043,962	32.16%	514,884	15.9%
United States	40,534,516	48.31%	49,820,840	35.4%	25,254,860	14.98%



ADVERSE CHILDHOOD EXPERIENCES

While many people would accept that negative experiences in childhood might affect later mental health, the connection between early traumatic experiences and physical health has only recently begun to be understood.

An adverse childhood experience (ACE) is a traumatic experience prior to the age of 18. To assess the presence of ACEs, adults are asked about the following:

1. Recurrent physical abuse
2. Emotional abuse
3. Sexual abuse
4. An alcohol and/or drug abuser in the household
5. An incarcerated household member
6. A household member who was chronically depressed, mentally ill, institutionalized or suicidal
7. Violence between adults in the home
8. Parental separation or divorce

The ACE score is a measure of cumulative exposure to adverse childhood conditions. The ACE score does not capture the frequency or severity of any given ACE in a person's life, focusing instead on the number of ACE categories experienced.

The original ACE study, as it is now known, was collaboration between the CDC and Kaiser Permanente. The results surprised even the lead researchers. There was a significant correlation between the number of ACEs a person experienced as a child and his or her adult health and well-being. As the number of reported ACEs increased, the likelihood of depression, cancer, diabetes, sexually transmitted diseases, alcoholism, drug use, smoking, ischemic heart disease, chronic bronchitis or emphysema, skeletal fractures, suicidality and homelessness significantly increased as well.

<http://wchildrenstrustfund.org/files/WisconsinACEs.pdf>

Wisconsin Behavioral Risk Factor Survey, 2011-2013	Pierce County	St. Croix County
# of respondents	103	128
# of respondents with 4+ ACE	9	14
% respondents with 4+ ACE	16.68%	12.74%
Est. total # of residents with 4+ ACE	5,365	8,148

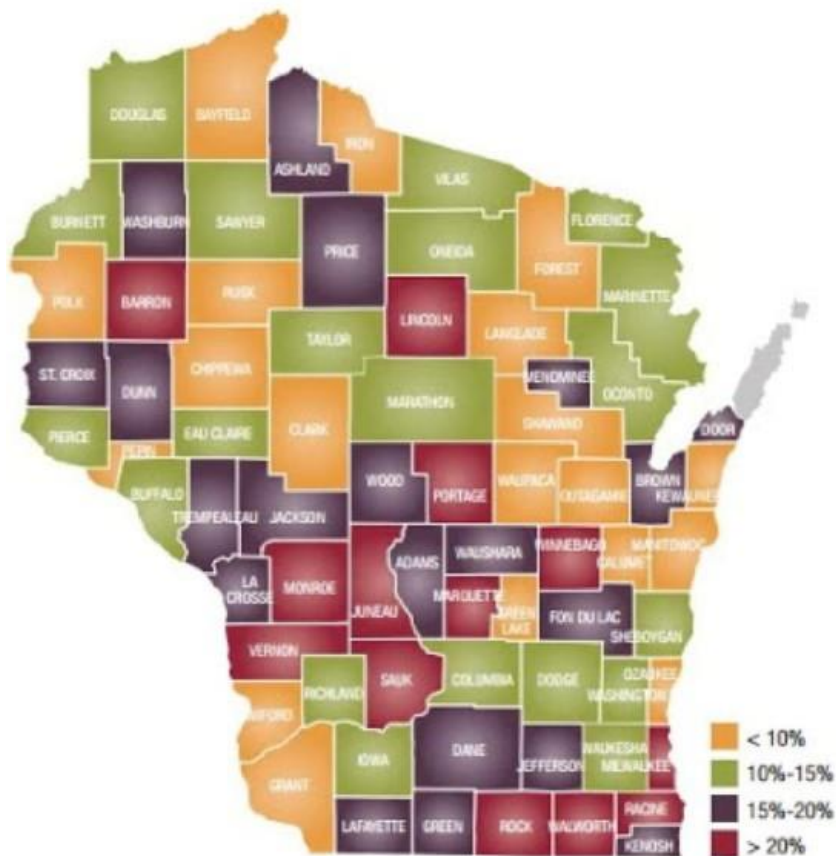


Figure 3. Prevalence of 4 or more ACEs in Wisconsin Counties

[http://wchildrenstrustfund.org/files/WisconsinACEs\(2014Brief\).pdf](http://wchildrenstrustfund.org/files/WisconsinACEs(2014Brief).pdf)

Table 1. ACE-Related Odds of Having a Physical Health Condition¹

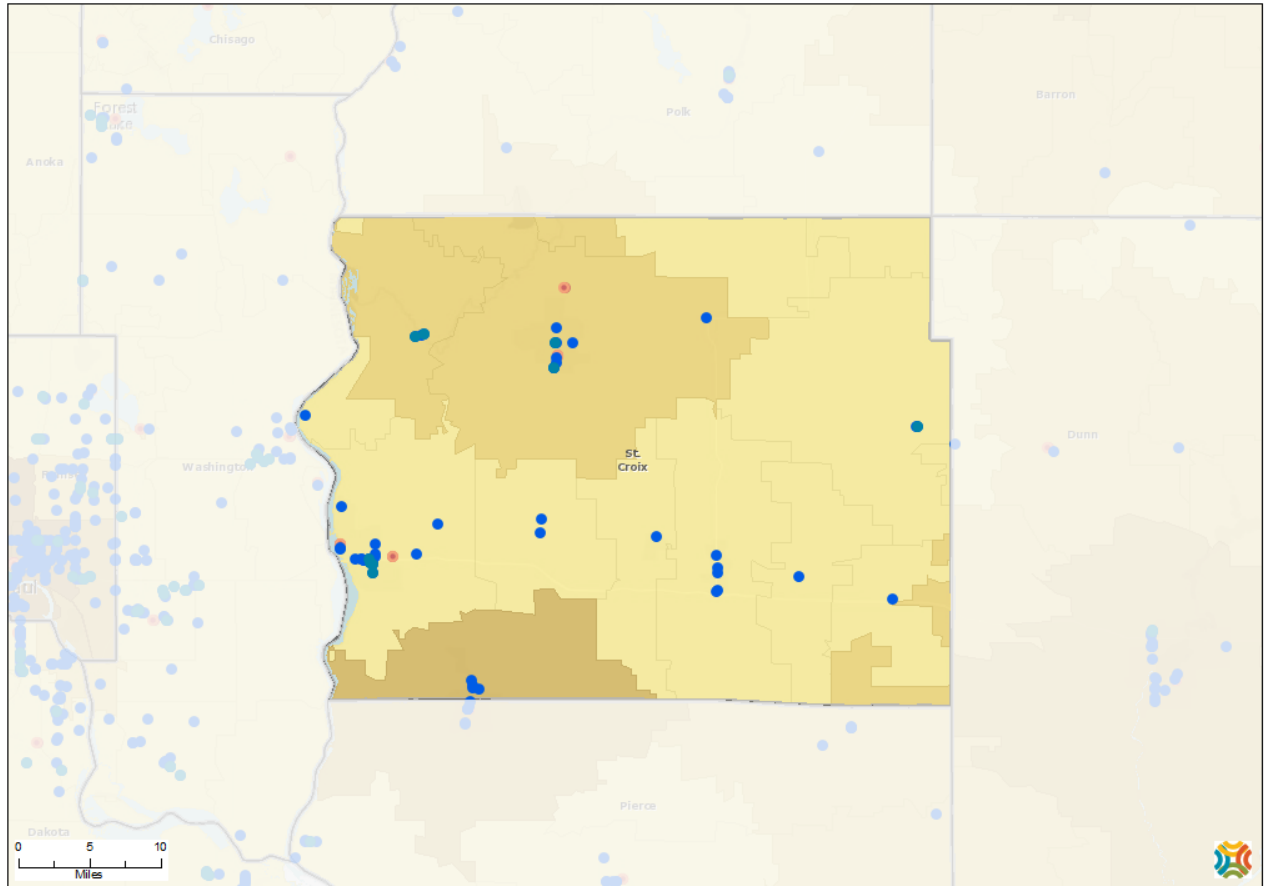
Health Condition	0 ACEs	1 ACEs	2 ACEs	3 ACEs	4+ ACEs
Arthritis	100%	130%	145%	155%	236%
Asthma	100%	115%	118%	160%	231%
Cancer	100%	112%	101%	111%	157%
COPD	100%	120%	161%	220%	399%
Diabetes	100%	128%	132%	115%	201%
Heart Attack	100%	148%	144%	287%	232%
Heart Disease	100%	123%	149%	250%	285%
Kidney Disease	100%	83%	164%	179%	263%
Stroke	100%	114%	117%	180%	281%
Vision	100%	167%	181%	199%	354%

<http://acestoohigh.com/2013/10/>

ACCESS TO HEALTHY FOOD

St. Croix County, Population Under 100% Poverty Level by Zip Code, and Locations of Major Super Markets, SNAP-Authorized Retailers, and Farmer’s Markets

St. Croix



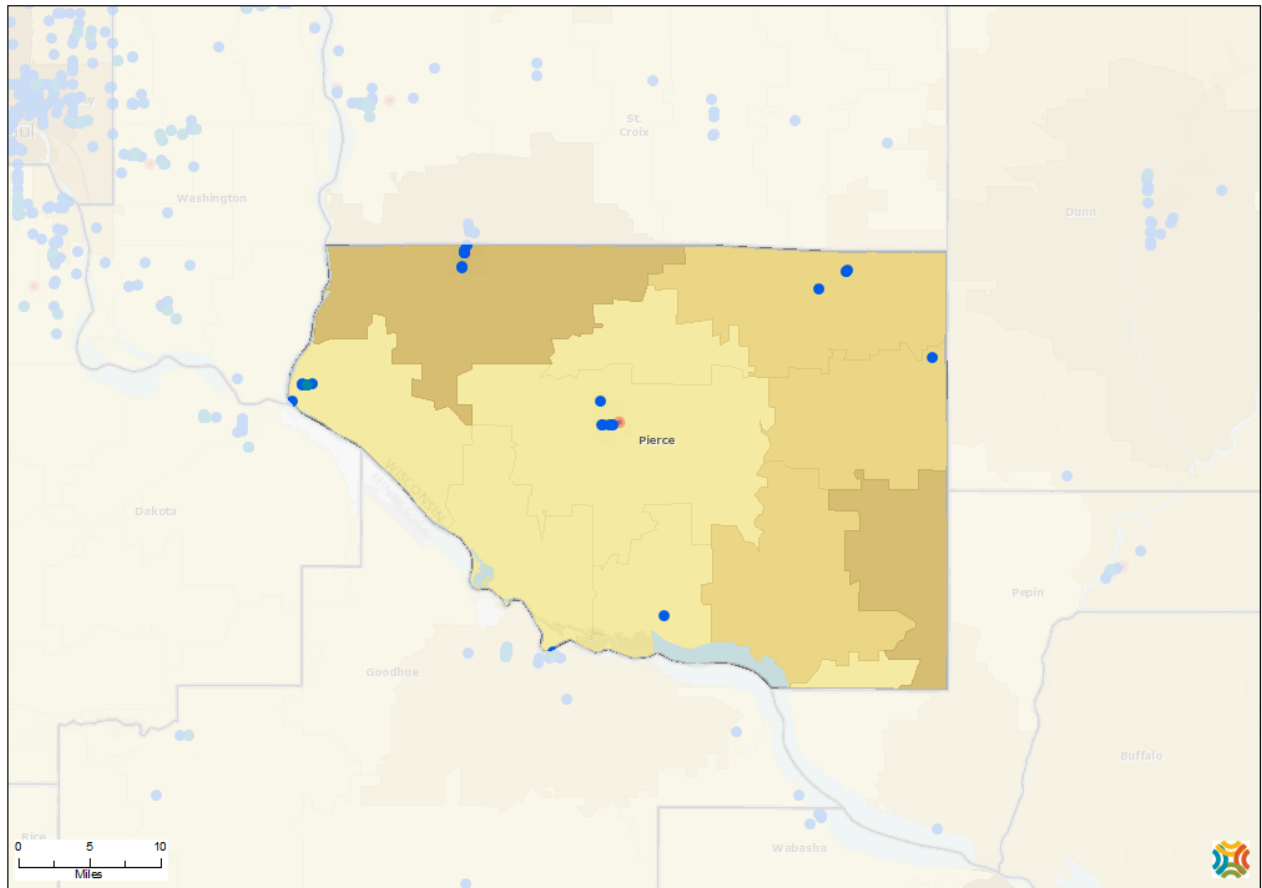
Map Legend

<ul style="list-style-type: none"> ● Major Supermarkets, USDA May 2015 ● SNAP-Authorized Retailers, USDA May 2015 ● Farmers' Markets, USDA - AMS May 2015 	<p>Population Below the Poverty Level, Percent by ZCTA, ACS 2009-13</p> <ul style="list-style-type: none"> ■ Over 20.0% ■ 15.1 - 20.0% ■ 10.1 - 15.0% ■ Under 10.1% ■ No Data or Data Suppressed
--	---

Community Commons, 11/18/2015

Pierce County, Population Under 100% Poverty Level by Zip Code, and Locations of Major Super Markets, SNAP-Authorized Retailers, and Farmer’s Markets

Pierce



Map Legend

- Major Supermarkets, USDA May 2015
 - SNAP-Authorized Retailers, USDA May 2015
 - Farmers' Markets, USDA - AMS May 2015
- Population Below the Poverty Level, Percent by ZCTA, ACS 2009-13
- Over 20.0%
 - 15.1 - 20.0%
 - 10.1 - 15.0%
 - Under 10.1%
 - No Data or Data Suppressed

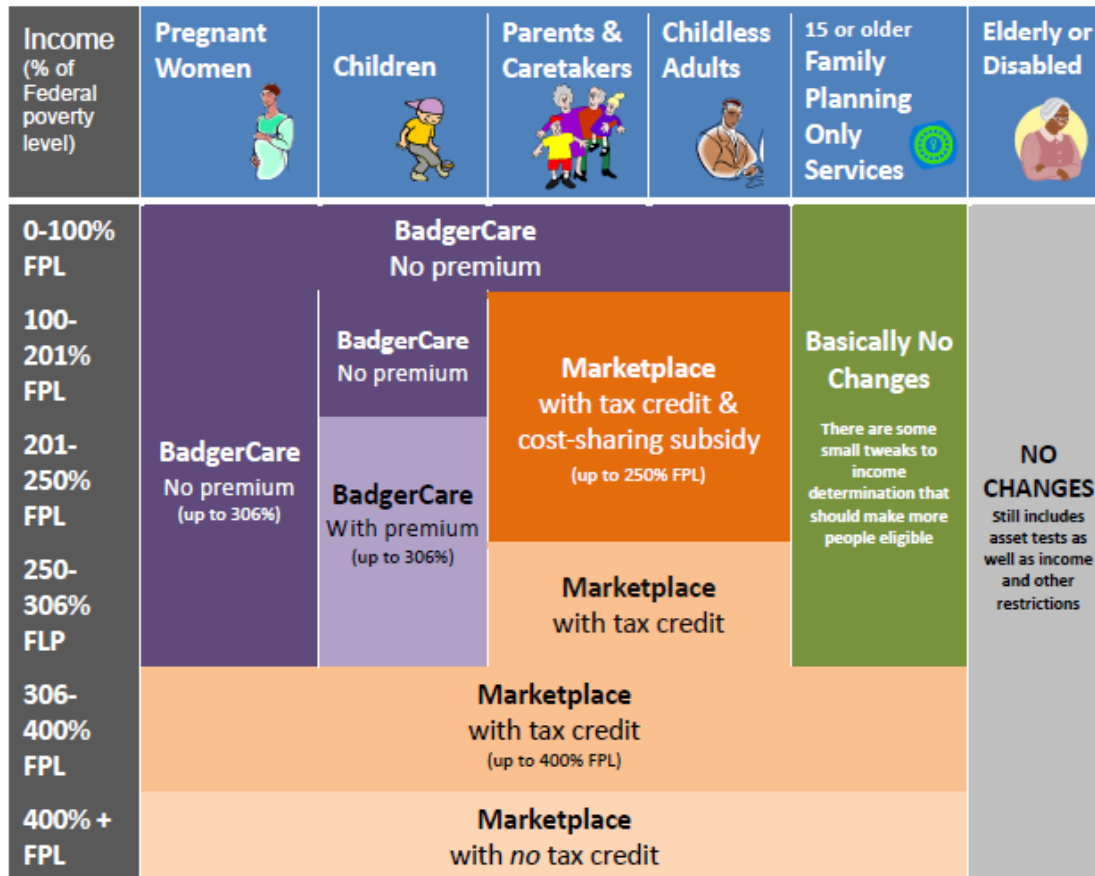
Community Commons, 11/18/2015

ACCESS TO INSURANCE, ACCESS TO DENTAL CARE

**THE NEW HEALTH INSURANCE LANDSCAPE
IN WISCONSIN**



The insurance options and income eligibility ranges for people who DO NOT have access to qualifying employer-sponsored insurance:



2015 Federal Poverty Levels (annual income)

Group Size	100%	138%	201%	250%	306%	400%
One	\$11,770	\$16,243	\$23,658	\$29,425	\$36,016	\$47,080
Two	15,930	21,983	32,019	39,825	48,746	63,720
Three	20,090	27,724	40,381	50,225	61,475	80,360
Four	24,250	33,465	48,743	60,625	74,205	97,000
Five	28,410	39,206	57,104	71,025	86,935	113,640
Each additional	+4,160	+5,741	+8,362	+10,400	+12,730	+16,640

Prepared by the Wisconsin Council on Children & Families

Updated 01.26.2015

NUMBER OF DENTISTS TAKING NEW BADGERCARE PATIENTS:

- St. Croix County: 3
- Pierce County: 0

ALCOHOL AND OTHER DRUGS – USE AND COST TO SOCIETY

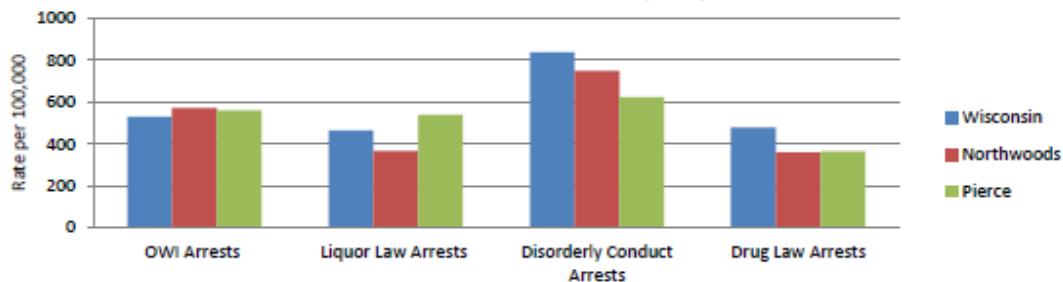


Northwoods Coalition Epidemiological Profile on Alcohol and Other Drug Use for Pierce County

Population estimates (2014)¹: 40,958

Alcohol	Wisconsin	Northwoods	Pierce
Alcohol licenses issued (2012-2013) ²	17,173	5,255	117
Alcohol licenses per 500 population (2012-2013) ²	1.5	2.0	1.4
Class A liquor licenses issued (2012-2013) ²	4,325	1,306	29
Class B liquor licenses issued (2012-2013) ²	12,938	4,121	89
Prevalence of current alcohol use among adults (2008-2010) ²	66%	62%	70%
Prevalence of binge drinking among adults (2008-2010) ²	22%	22%	25%
Prevalence of excessive drinking among adults (2006-2012) ³	24%	25%	31%
Annual economic cost of excessive alcohol use ⁴	\$6,800,000,000	\$1,476,500,000	\$67,800,000
Cost of excessive alcohol use per resident ⁴	\$1,200	\$1,217	\$1,652.94
OWI arrests (rate per 100,000 population (2012)) ²	529	619	559
Liquor law arrests (rate per 100,000 population (2012)) ²	464	398	540
Persons injured in alcohol-related crashes (2014) ⁵	2,694	662	15
Alcohol-related hospitalizations (2012) ²	48,074	10,959	145
Persons killed in alcohol-related crashes (2014) ⁵	162	40	2
Annual average number of alcohol-related liver cirrhosis deaths (2002-2010) ²	245	55	2
Annual average number of other alcohol-related deaths (2002-2010) ²	1,083	6	5
Alcohol-related suspensions and expulsions in public schools (2011-2012) ²	766	175	7

Law Enforcement Arrest Data (2012)

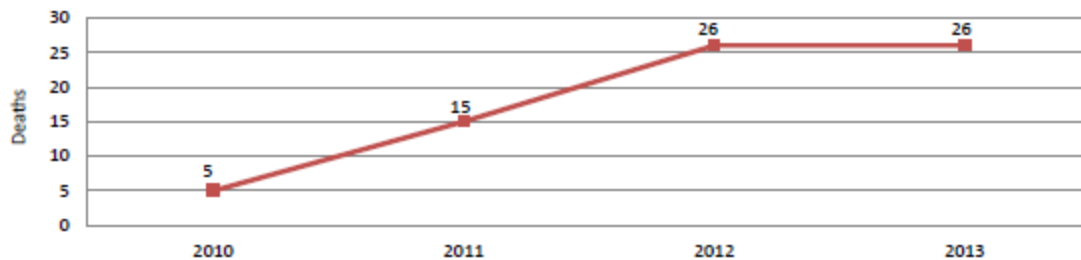


Prescription Drugs	Wisconsin	Northwoods	Pierce
Doses of prescriptions dispensed per population (October 1–December 31, 2014) ⁶	27.7	26.6	14.1
Doses of prescriptions dispensed (October 1–December 31, 2014) ⁶	163,438,835	33,960,810	578,327
Controlled substance prescriptions written (rate per 1,000 population (January – June 2013)) ²	886	526	67
Proportion of prescriptions for narcotics (January-June 2013) ²	54.7%	56%	56%
Proportion of prescriptions for sedatives (January-June 2013) ²	9.7%	10%	12%
Proportion of prescriptions for stimulants (January-June 2013) ²	15.3%	15%	15%
Proportion of prescriptions for tranquilizers (January-June 2013) ²	20.3%	19%	17%
Emergency Room visits due to poisonings (2012) ¹¹	8,286	1,794	59
Pounds of medications collected at National DEA take-back events (2014) ^{7,8}	84,087	9,586	0
Pounds of medications disposed of from permanent locations (September 2010 – September 2014) ^{7,8}	245,164*	56,608	0

* No numbers recorded for Wisconsin at April 2011 DEA event

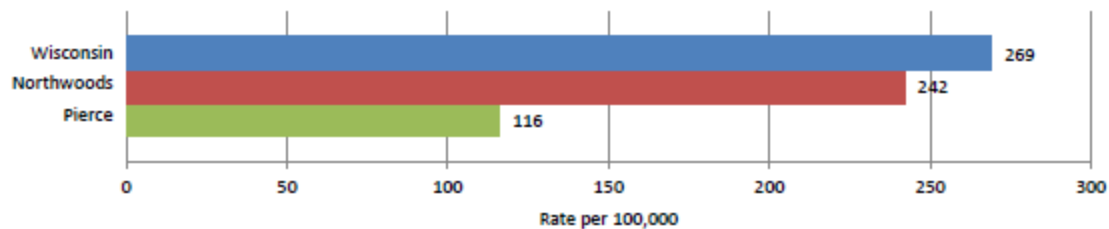
Heroin	Wisconsin	Northwoods	Pierce
Heroin cases sent to state crime lab (2014) ¹⁰	1,130	199	2
Grams of heroin seized (2013) ¹⁰	3,952.56	1,287.7	4
Hepatitis C Cases (2013) ¹¹	2,638	539	8
Percent of Wisconsin's Hepatitis C Cases (2012) ¹¹	NA	20	<1
Heroin overdose deaths (2010-2013) ⁹	659	67	2
Persons prosecuted for drug-related homicide (2010-2013) ⁹	186	33	1
Opioid-related hospitalizations, ages 12-25 (rate per 1,000 population (2011-2012)) ²	1.7	1.9	0.5

Northwoods Coalition Heroin Overdose Deaths (2010-13)



Multiple Substances and Other Drugs	Wisconsin	Northwoods	Pierce
Reported property crimes (2012) ⁴	139,102	25,595	830
Reported violent crimes (2012) ⁴	15,969	1,973	90
Disorderly conduct arrests (rate per 100,000 population (2012)) ⁴	838	749	623
Drug law arrests (rate per 100,000 population (2012)) ²	478	358	364
Drug-related hospitalizations (2012) ⁴	15,454	3,437	49
Drug-related suspensions and expulsions in public schools (2011-2012) ⁴	3,298	630	4

Drug-Related Hospitalizations (2011-12)



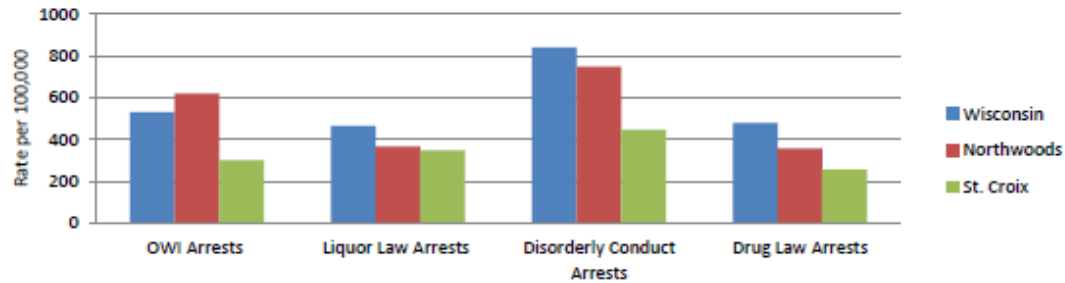


Northwoods Coalition Epidemiological Profile on Alcohol and Other Drug Use for St. Croix County

Population estimates (2014)¹: 86,759

Alcohol	Wisconsin	Northwoods	St. Croix
Alcohol licenses issued (2012-2013) ²	17,173	5,255	189
Alcohol licenses per 500 population (2012-2013) ²	1.5	2.0	1.1
Class A liquor licenses issued (2012-2013) ²	4,325	1,306	74
Class B liquor licenses issued (2012-2013) ²	12,938	4,121	201
Prevalence of current alcohol use among adults (2008-2010) ⁴	66%	62%	69%
Prevalence of binge drinking among adults (2008-2010) ²	22%	22%	28%
Prevalence of excessive drinking among adults (2006-2012) ³	24%	25%	30%
Annual economic cost of excessive alcohol use ⁴	\$6,800,000,000	\$1,476,500,000	\$105,200,000
Cost of excessive alcohol use per resident ⁴	\$1,200	\$1,217	\$1247.78
OWI arrests (rate per 100,000 population (2012)) ⁷	529	619	300
Liquor law arrests (rate per 100,000 population (2012)) ⁷	464	398	347
Persons injured in alcohol-related crashes (2014) ⁵	2,694	662	36
Alcohol-related hospitalizations (2012) ²	48,074	10,959	520
Persons killed in alcohol-related crashes (2014) ⁵	162	40	2
Annual average number of alcohol-related liver cirrhosis deaths (2002-2010) ⁴	245	55	1
Annual average number of other alcohol-related deaths (2002-2010) ⁴	1,083	6	9
Alcohol-related suspensions and expulsions in public schools (2011-2012) ²	766	175	14

Law Enforcement Arrest Data (2012)

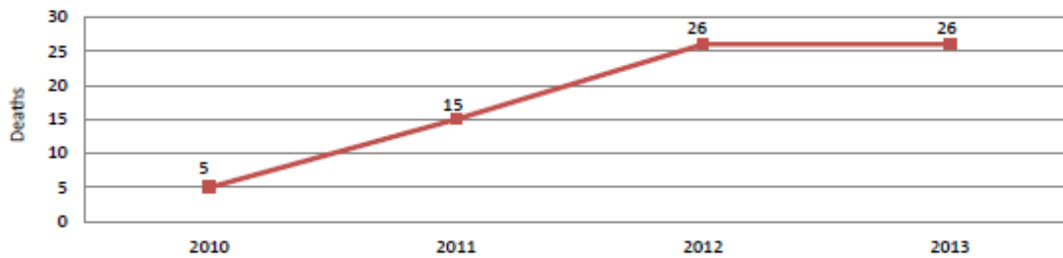


Prescription Drugs	Wisconsin	Northwoods	St. Croix
Doses of prescriptions dispensed per population (October 1–December 31, 2014) ⁶	27.7	26.6	19.1
Doses of prescriptions dispensed (October 1–December 31, 2014) ⁶	163,438,835	33,960,810	1,659,700
Controlled substance prescriptions written (rate per 1,000 population (January – June 2013)) ²	886	526	281
Proportion of prescriptions for narcotics (January-June 2013) ⁷	54.7%	56%	54%
Proportion of prescriptions for sedatives (January-June 2013) ⁷	9.7%	10%	11%
Proportion of prescriptions for stimulants (January-June 2013) ⁷	15.3%	15%	19%
Proportion of prescriptions for tranquilizers (January-June 2013) ⁷	20.3%	19%	15%
Emergency Room visits due to poisonings (2012) ¹¹	8,286	1,794	96
Pounds of medications collected at National DEA take-back events (2014) ^{7,8}	84,087	9,586	0
Pounds of medications disposed of from permanent locations (September 2010 – September 2014) ^{7,8}	245,164*	56,608	0

* No numbers recorded for Wisconsin at April 2011 DEA event

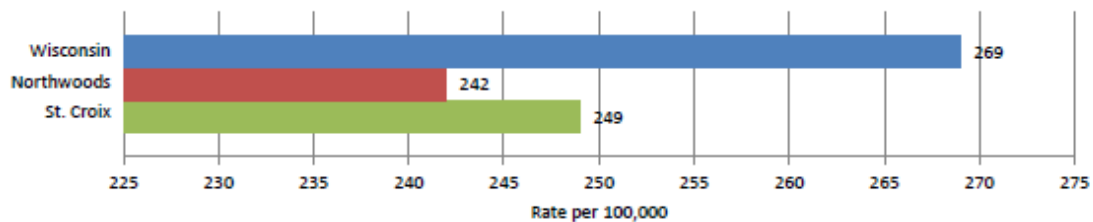
Heroin	Wisconsin	Northwoods	St. Croix
Heroin cases sent to state crime lab (2014) ¹⁰	1,130	199	11
Grams of heroin seized (2013) ¹⁰	3,952.56	1,287.7	14.5
Hepatitis C Cases (2013) ¹¹	2,638	539	18
Percent of Wisconsin's Hepatitis C Cases (2012) ¹¹	NA	20	1
Heroin overdose deaths (2010-2013) ⁹	659	67	4
Persons prosecuted for drug-related homicide (2010-2013) ⁹	186	33	1
Opioid-related hospitalizations, ages 12-25 (rate per 1,000 population (2011-2012)) ²	1.7	1.9	2.6

Northwoods Coalition Heroin Overdose Deaths (2010-13)



Multiple Substances and Other Drugs	Wisconsin	Northwoods	St. Croix
Reported property crimes (2012) ²	139,102	25,595	1,166
Reported violent crimes (2012) ²	15,969	1,973	48
Disorderly conduct arrests (rate per 100,000 population (2012)) ²	838	749	445
Drug law arrests (rate per 100,000 population (2012)) ²	478	358	256
Drug-related hospitalizations (2012) ²	15,454	3,437	155
Drug-related suspensions and expulsions in public schools (2011-2012) ²	3,298	630	35

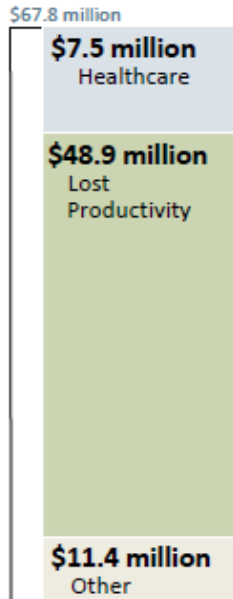
Drug-Related Hospitalizations (2011-12)



The Cost of Excessive Alcohol Use in Pierce County

Annual economic cost of excessive alcohol use in Pierce County **\$67.8 MILLION**

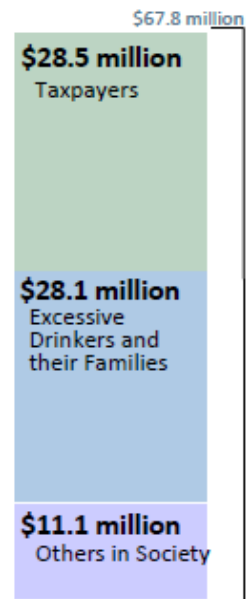
What We Pay For¹



Pierce County population: 40,862²

Cost per Pierce County resident: \$1,652.94

We All Pay¹



Other includes costs associated with the criminal justice system, motor vehicle crashes, and other consequences.

Others in Society includes private health insurers, employers, crime victims, and others.

Consequences of Excessive Alcohol Use

In 2011, excessive alcohol consumption in Pierce County contributed to at least:

- 13 alcohol-related deaths³
- 155 alcohol-related hospitalizations⁴
- 634 alcohol-related arrests⁵

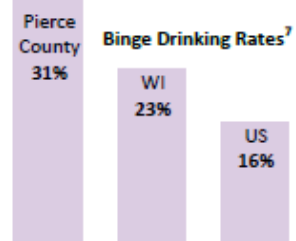
For more details, please refer to the full report, available online at <http://uwphi.pophealth.wisc.edu/>.

How We Got Here

Excessive alcohol consumption includes:

- binge drinking (5+ drinks/occasion for men; 4+ drinks for women)
- heavy drinking (2+ drinks/day for men, 1+ for women)
- any alcohol consumption by youth under age 21
- any alcohol consumption by pregnant women.⁶

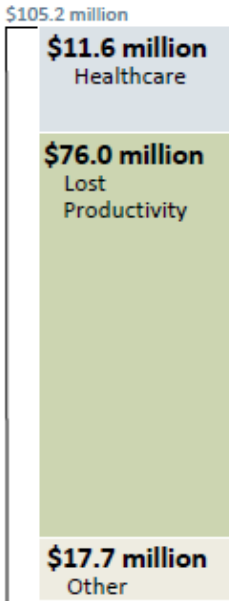
Binge drinking is responsible for 76% of the economic cost of excessive alcohol consumption.¹



The Cost of Excessive Alcohol Use in Saint Croix County

Annual economic cost of excessive alcohol use in Saint Croix County **\$105.2 MILLION**

What We Pay For¹

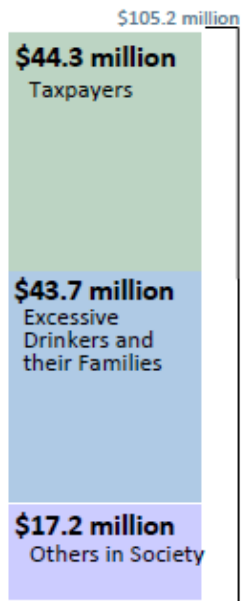


Saint Croix County population: 84,922²

Cost per Saint Croix County resident: \$1,247.78

Other includes costs associated with the criminal justice system, motor vehicle crashes, and other consequences.

We All Pay¹



Others in Society includes private health insurers, employers, crime victims, and others.

Consequences of Excessive Alcohol Use

In 2011, excessive alcohol consumption in Saint Croix County contributed to at least:

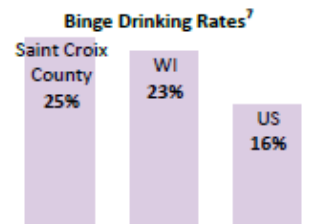
- 11 alcohol-related deaths³
- 270 alcohol-related hospitalizations⁴
- 603 alcohol-related arrests⁵

How We Got Here

Excessive alcohol consumption includes:

- binge drinking (5+ drinks/occasion for men; 4+ drinks for women)
- heavy drinking (2+ drinks/day for men, 1+ for women)
- any alcohol consumption by youth under age 21
- any alcohol consumption by pregnant women.⁶

Binge drinking is responsible for 76% of the economic cost of excessive alcohol consumption.¹



For more details, please refer to the full report, available online at <http://uwphi.pophealth.wisc.edu/>.

Black PD, Paltzer JT. *The Burden of Excessive Alcohol Use in Wisconsin*. University of Wisconsin Population Health Institute, 2013.

MENTAL HEALTH

Hospital Data: Emergency Room Utilization

	Baldwin*	Hudson	New Richmond	River Falls
Total Encounters:	N/A	9573	5422	6223
Diagnoses:				
• Alcohol-related disorders	N/A	84	51	79
• Mood disorders	N/A	56	33	41
• Substance-related disorders	N/A	22	23	30
• Suicide and intentional self-inflicted injury	N/A	10	10	19

*Baldwin Area Medical Center converted to a new EMR on 04/01/15 and has limited access to prior data.

County Data: Transfers for Inpatient Treatment

Winnebago Mental Health Institute
(250 miles east of River Falls)

ED Admissions from Pierce and St. Croix Counties

(2015 through 6/30)

County/Age	2010	2011	2012	2013	2014	2015	Grand Total
PIERCE	1	3	2	5	6	4	21
Age 0-17	1	1	2	2	1		7
Age 18-44		1		2	5	2	10
Age 45+		1		1		2	4
ST. CROIX	1	2	4	13	34	19	73
Age 0-17	1	1	2	6	12	1	23
Age 18-44		1		6	18	17	42
Age 45+			2	1	4	1	8

Data provided by Michelle Larson, Assistant Administrator, Western Wisconsin Area, DHS

TRAFFIC FATALITIES

Persons Killed in Pierce and St. Croix Counties in Crashes and the Highest Driver Blood Alcohol Concentration in Crash, 2011-2013

2013				
	BAC = 0.00	BAC = .01--.07	BAC = .08+	Total Killed
PIERCE	8	0	0	8
ST CROIX	11	0	1	12

2012				
	BAC = 0.00	BAC = .01--.07	BAC = .08+	Total Killed
PIERCE	5	5	2	12
ST CROIX	11	0	2	13

2011				
	BAC = 0.00	BAC = .01--.07	BAC = .08+	Total Killed
PIERCE	4	0	4	8
ST CROIX	7	0	6	12

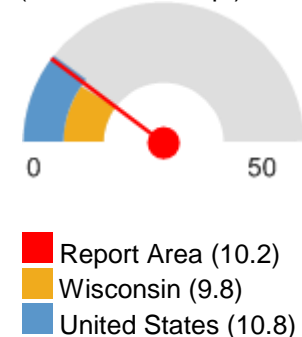
Source: <http://www-fars.nhtsa.dot.gov/States/StatesAlcohol.aspx>

Mortality - Motor Vehicle Accident

This indicator reports the rate of death due to motor vehicle crashes per 100,000 population, which include collisions with another motor vehicle, a nonmotorist, a fixed object, and a non-fixed object, an overturn, and any other non-collision. This indicator is relevant because motor vehicle crash deaths are preventable and they are a cause of premature death.

Report Area	Total Population	Average Annual Deaths, 2007-2011	Crude Death Rate (Per 100,000 Pop.)	Age-Adjusted Death Rate (Per 100,000 Pop.)
Report Area	125,756	13	10.5	10.2
Pierce County, WI	40,857	5	11.7	9.4
St. Croix County, WI	84,899	8	9.9	10.6
Wisconsin	5,707,426	572	10	9.8
United States	311,430,373	34,139	11	10.8

Motor Vehicle Crash Death, Age-Adjusted Death Rate (Per 100,000 Pop.)



Data Source: Centers for Disease Control and Prevention, National Vital Statistics System. Accessed via CDC WONDER. 2009-13.